

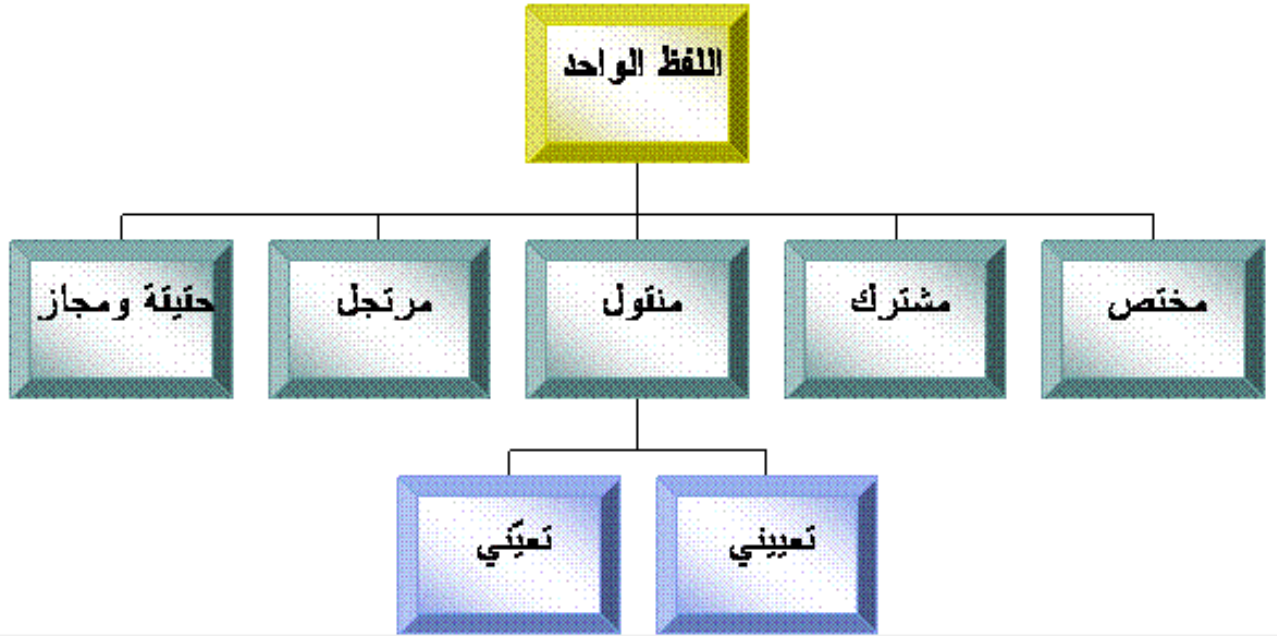


Al-Mantiq

Lesson 37

The Divisions of Words

تقسيمات الألفاظ (المنقول التعييني و المنقول التعييني)



The figurative meaning must be understood by an indicative to show that the literal meaning is not meant. It is not appropriate to use “مشترك” or “مجاز” expressions in definitions or arguments, unless the context makes the intended meaning clear. It would be better to avoid “مجاز” language in any kind of scientific discourse.

“منقول” word gets divided into:

A) “تعييني”: Derived by a specific person by choice

B) “تعييني”: Specified for a meaning by mere usage of people during time